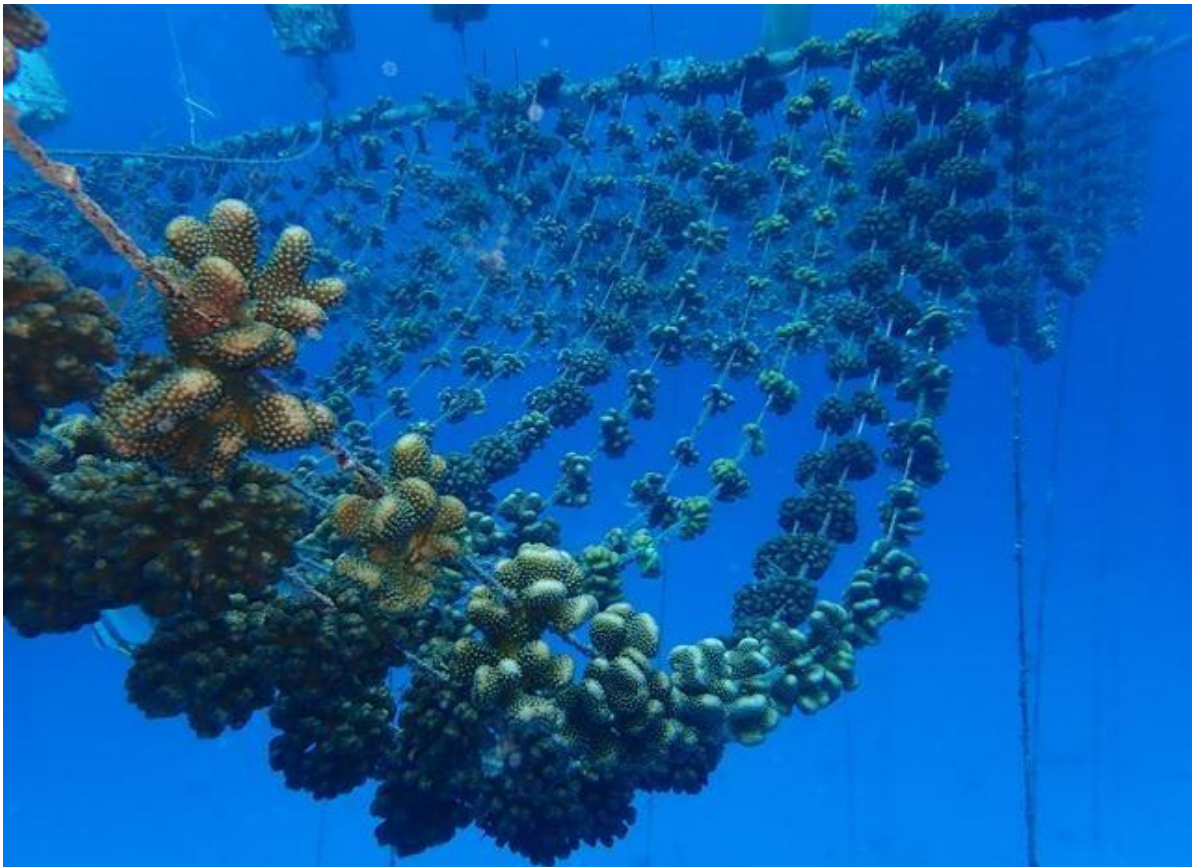




ADAPTATION FUND
Readiness Programme
for Climate Finance

Webinar: Evaluation Policy Considerations in Project Design

31 July 2024 Summary Report



Introduction

The Adaptation Fund hosted a webinar on Evaluation Policy Considerations in Project Design. This webinar introduced the newest AF Evaluation Policy Guidance Note, Evaluation in Project Design. This guidance note is the 11th in the series to support implementation of the AF Evaluation Policy. The webinar discussed how the policy applies to proposals and how putting good M&E principles into place at the design stage can improve project quality.

Key discussion points from the webinar are noted below:

Questions	Answers
Where can we find the guidance note on the AF website?	it will be published on the website in August. https://www.adaptation-fund.org/about/evaluation/publications/foundational-documents/ .
Evaluation Policy is applicable from the date of approval or effective date?	For the new evaluation policy, the terminal evaluation is supposed to be done independently. Therefore the IE and EE can't do it. It is different from mid term evaluation which can be conducted semi-independently or independently
Are there resources for establishing the climate science basis (guidance document and methodologies for climate adaptation etc.). Any tools and data sources the AF refers to?	The AF is not prescriptive when it comes to climate science basis guidelines. There are many out there depending on the sector for example. These can be use if relevant to the project/ programme. For example: IPCC assessment reports and UNFCC guidelines, NAP technical guidelines. Some tools that exist, ADAPT, for EbA- ARIES (ARTificial Intelligence for Ecosystem Services) etc.
In the case of the project screening, I understood that when the exact location of the measurement is not yet known, the screening could be more precise after the approval of the project by AF. Could the NIE, at that time, benefit from a facility in the event of an environmental impact study?	If there are unidentified elements, with an adequate justification the USP approach can be used. However, please note "completely unidentified projects" is not acceptable. The USPs can be partially unidentified - this is acceptable. Please use the USP guidance in project proposal materials page - https://www.adaptation-fund.org/apply-funding/project-funding/project-proposal-materials/ Please note - For USPs, you need to include details for the process for USP management.
For LLA projects, where non accredited organizations have projects. Should they be submitted directly by organizations, or does it have to be through an NIE?	There are 2 windows. There is the single country LLA which is similar to previous EDA. In this model, the IE will decide criteria, eligibility and local actors will submit proposal to NIEs. Key element is to enable capacity of local actors,

	identify challenges. The global aggregator will be implemented by MIE and RIE and they will set criteria and local actors will submit proposal to MIE and RIE.
--	--