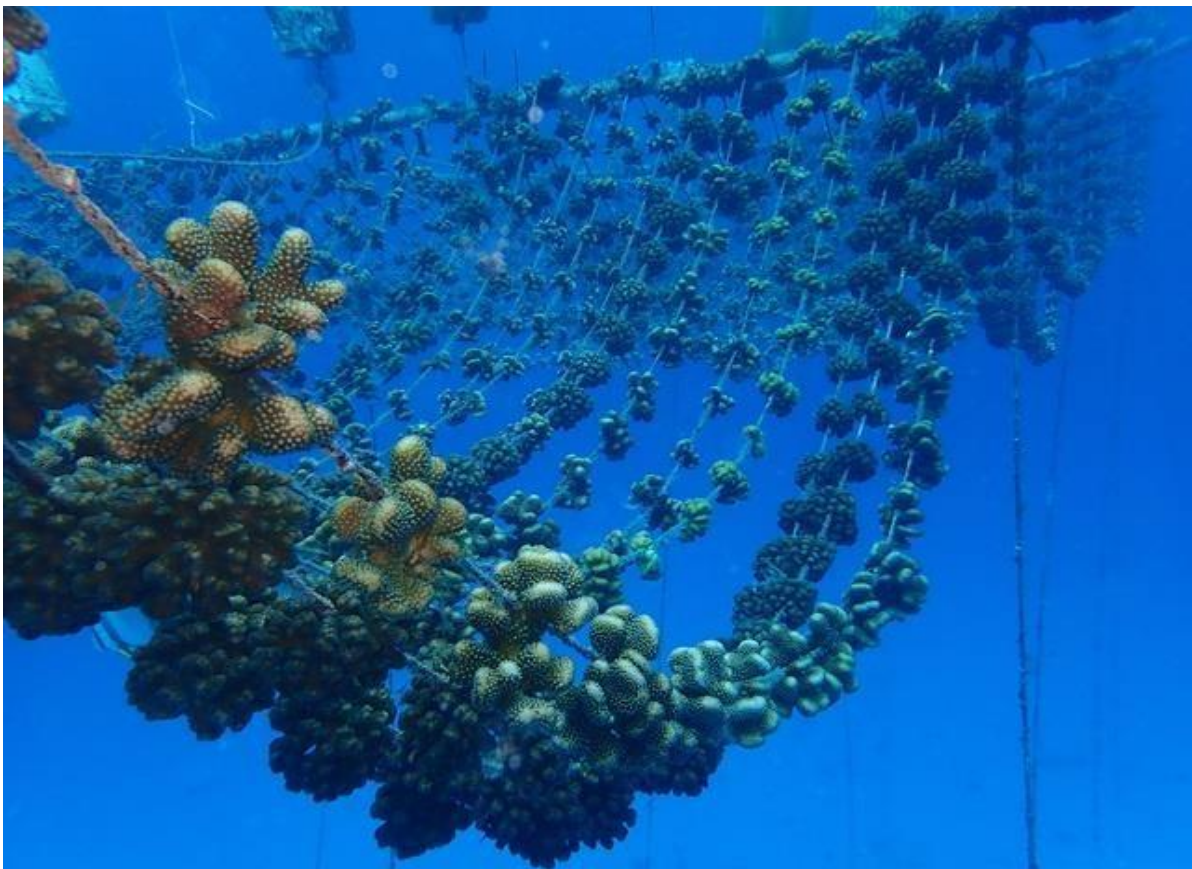




ADAPTATION FUND
Readiness Programme
for Climate Finance

Webinar on Gender

17 June 2024 Summary Report



Introduction

The Adaptation Fund Board Secretariat through its Readiness Programme hosted a webinar on Gender in order to accelerate, encourage and enable the goal of gender equality, the empowerment of women and girls and the equal treatment of people regardless of gender, including the equal opportunities for access to Fund resources and services.

The webinar discussed the e-learning course on gender mainstreaming and the role of data in informing environmental and gender-based violence programming.

Welcome Remarks

The session began with welcome remarks from Mr. Farayi Madziwa, Readiness Program Officer at the secretariat, who highlighted the importance of this webinar due to the changes in the e-learning course and increasing importance of data in gender mainstreaming.

Key highlights from the webinar include:

- Focus on the integration of a gender-responsive approach throughout the lifecycle of the AF projects and programmes.
- A three-year study surveying 5,300 women who achieved engineering degrees found 38% left engineering careers or never started due to work cultures that prioritised men over women from the very start – including within studies and internship experiences – and pervasive environments of sexual harassment
- A Women In Ocean Sciences survey of 980 women saw 78% of respondents reporting having experienced sexual harassment in the marine science workplace and learning environments
- According to a survey by the National Academies of Sciences, Engineering, and Medicine, 58% of female STEM students face sexual harassment during their academic years.
- In 2015, a report showed that 1 in 3 women professors of STEM experienced sexual violence.
- A 2022 report commissioned by the National Science Foundation (NSF) showed that out of the 290 female respondents, 72% agreed that sexual harassment and sexual assault are a problem.
- GBV is used to negotiate and reinforce existing privileges and power imbalances in access and control of natural resources

- These dynamics are exacerbated in the face of climate change and environmental degradation and threats
- GBV is used to shape and control environment work and environmental defence
- The Resilient, Inclusive and Sustainable Environments (RISE) grants challenge supports activities designed to address GBV and environmental linkages in environment and climate-related programs
- The goal is to generate evidence and promising interventions for global learning and application
- It contributes to preventing harm and fostering more inclusive and equitable conservation and climate action

Closing Remarks

The webinar closed with concluding remarks from Farayi Madziwa, who thanked everyone for their participation and their engagement in the webinar, despite joining from different time zones.