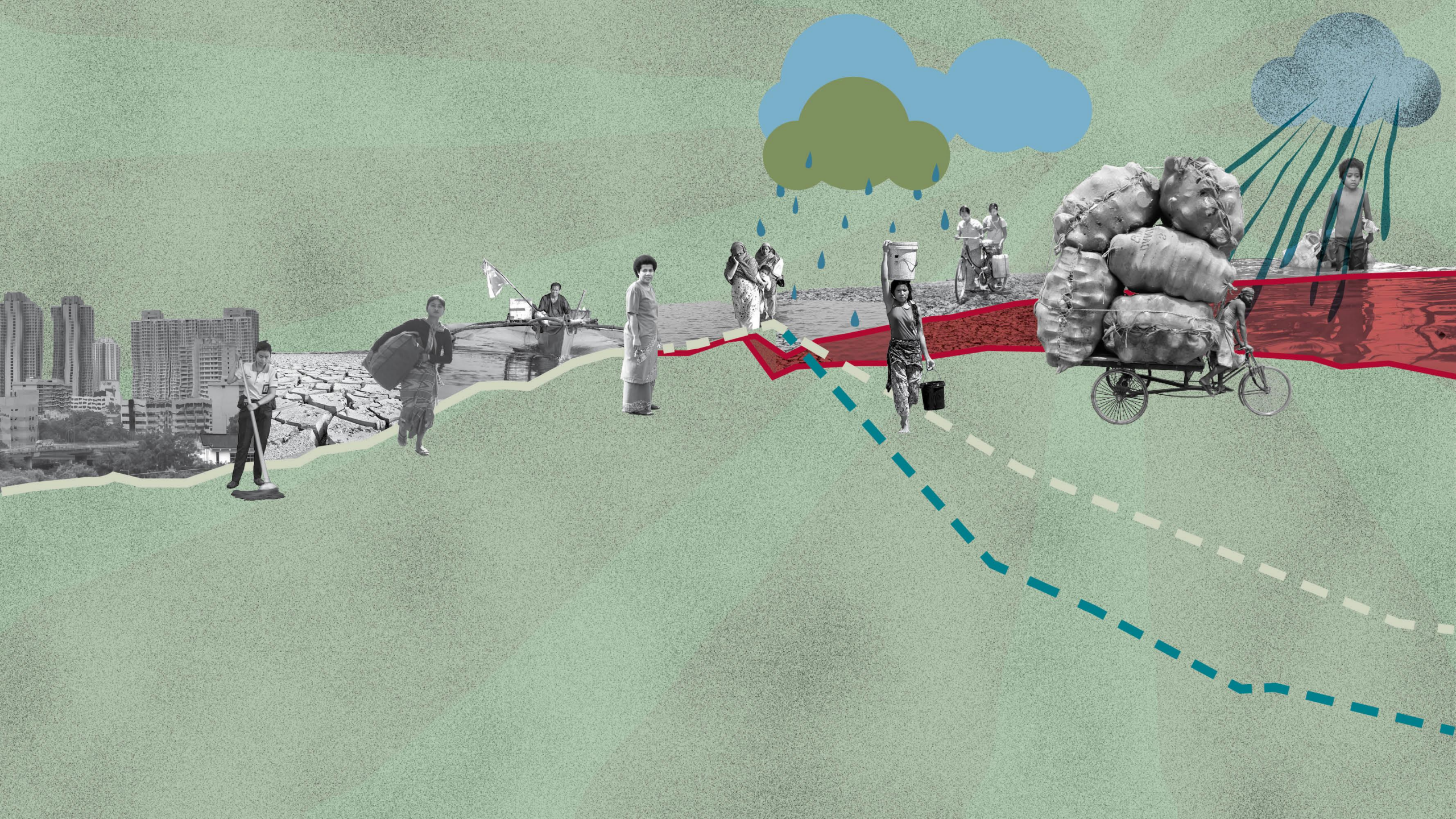
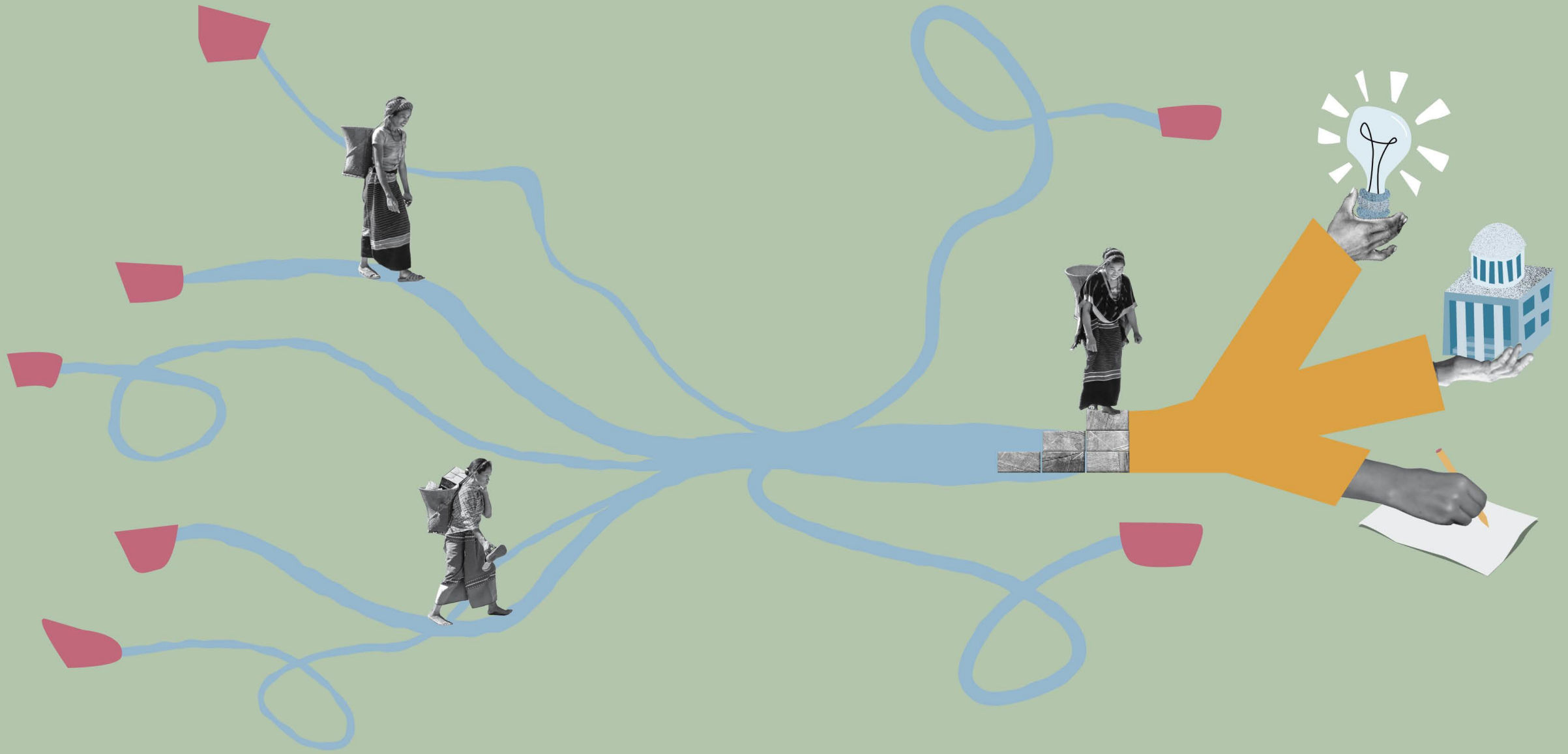


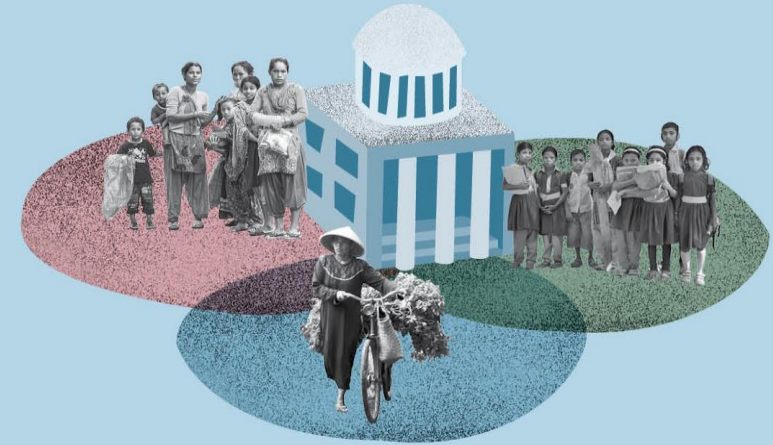


# The Community Resilience Partnership Program: Strengthening Climate Resilience at Scale While Leaving No One Behind









**CRPP  
Trust Fund  
\$75 million**

Supported by donors to provide technical assistance and grant resources to eligible projects

Established in 2022, fully operational in 2023

**OUTPUTS**

Institutional and community capacity to develop and deliver climate adaptation investments at community level strengthened

Knowledge and action research on climate risk—informed pro-poor community level solutions strengthened

Investments supporting inclusive, pro-poor community level adaptation prepared and/or implemented

Improved information and systems for delivering applied climate risk informed investments at scale

Climate resilient pro-poor livelihoods investments implemented

Climate adaptation pro-poor infrastructure

**CRPP  
Investment Fund  
\$675 million**

Supported by:  
**GCF \$120 million**  
and  
**ADB \$555 million**

Approved in 2023

Eligible countries: Cambodia, Indonesia, Lao PDR, Pakistan, Papua New Guinea, Timor-Leste, and Vanuatu



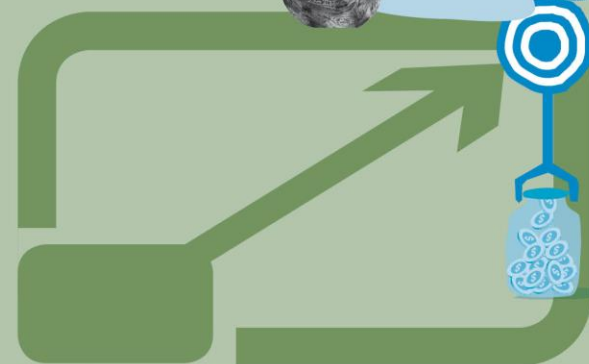
Pilots for learning

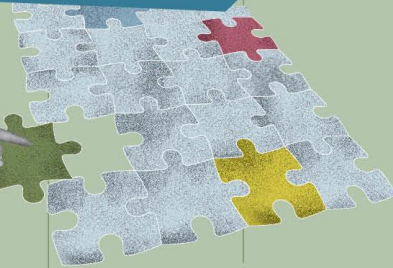


Investment design and implementation



Policy support





year  
**10**



Investment design and implementation



Policy support



Pilots for learning

